

(THIS IS A MORE MODERN  
ARRANGEMENT, REMINISCENT  
OF THE WAY MANY GJ MUSICIANS  
PLAY THIS TUNE TODAY.)

# JOSEPH JOSEPH

(YOSL YOSL)

S. STEINBERG  
N. CASMAN

**A**

BMIN6



(EMIN)

F#7



(F#7)



BMIN6

(F#7)



**B**

BMIN6



(F#MIN7(b5))

B7

B7)

EMIN6



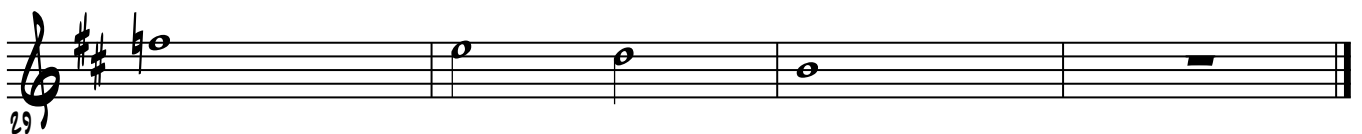
BMIN6



G7

F#7

BMIN6



29